

Scandinavian Trading LTD
 Agneta Roeser
 Unit 2, Glen Court, Canada Road
 Byfleet, Surrey, KT14 7JL
 United Kingdom

Emission measurements

(3 appendices)

Object

One sample of a paint was delivered to RISE by the customer.

Product name: **HW01**
 Production date: January 2018, batch: 180414
 Size of sample: 1 L, tin can
 Date of arrival to RISE: 2018-03-08
 Date of analysis: week 12 – 19, 2018

Assignment

Emission measurements according to product standard EN 16402:2013 (Paints and varnishes – Assessment of emissions of substances from coatings into indoor air – Sampling, conditioning and testing) and the horizontal standard EN 16516:2017 (Construction products: Assessment of release of dangerous substances – Determination of emissions into indoor air). The measurements are performed after 28 days regarding volatile organic compounds (VOC and VVOC/SVOC), carcinogenic substances (VOC-substances, EU Regulation No 1272/2008 Annex VI, cat 1A and 1B) and aldehydes (ISO 16000-3:2011).

Method

The paint was applied with paint roller on two glass plates of 0.40 x 0.25 m. Two coats per plate were applied, with drying time of 4 hours between the coats. Density and spreading rate were given by the customer. The date of application was 2018-03-23.

Table 1.

Density (g/cm ³)	Recommended spreading rate		Applied amount (g/coat)
	(m ² /L)	(g/m ²)	
1.28 - 1.31	8	162	16.2

The product is classified as product category 4 (Table 3, EN 16402:2013).

RISE Research Institutes of Sweden AB

Postal address	Office location	Phone / Fax / E-mail
Box 857	Brinellgatan 4	+46 10 516 50 00
SE-501 15 BORÅS	SE-504 62 BORÅS	+46 33 13 55 02
Sweden		info@ri.se

This report may not be reproduced other than in full, except with the prior written approval of the issuing laboratory.

The specimens were placed in a separate conditioning container (with air velocity of ca 0.2 m/s) in a room with controlled climate conditions of 23 ± 2 °C and 50 ± 5 % RH. Air samplings after 28 days of conditioning were carried out on 2017-04-23, including 3 days of preconditioning.

Test conditions in the chamber:

Chamber volume:	0.25 m ³
Temperature:	23 ± 0.5 °C
Relative humidity:	50 ± 5 % RH
Surface area of test specimen:	0.20 m ²
Air exchange rate:	0.5 h ⁻¹
Area specific air flow rate:	0.62 m ³ /m ² h.
Air velocity at specimen surface:	0.1 – 0.3 m/s

Tenax TA was used as adsorption medium for VOC. The tubes were thermally desorbed and analysed in accordance to RISE method 0601, similar to ISO 16000-6:2011 (Determination of volatile organic compounds in indoor and test chamber air by active sampling on Tenax TA sorbent, thermal desorption and gas chromatography using MS/FID). This means an analysis in a gas chromatograph and detection with a flame ionisation detector (FID) and mass selective detector (MS). The capillary column used is coated with 5% phenyl/ 95 % methylpolysiloxane. The FID signals are used for compound quantification. The total volatile organic compounds (TVOC) means compounds eluting between and including n-hexane to hexadecane, having boiling points in the range of about 70-260 °C. Minimum duplicate air samples were taken and the results are mean values. Sampled volumes are 3 to 7 L.

Tenax TA was also used as adsorption medium for testing of volatile carcinogenic compounds according to EU Regulation No 1272/2008 Annex VI, cat 1A and 1B), (exclusive formaldehyde), 1 µg/m³ and above.

The samplings of aldehydes were carried out with DNPH samplers. The samplers were analysed according to RISE method 2302, similar to ISO 16000-3:2011(Indoor air - Part 3: Determination of formaldehyde and other carbonyl compounds – Active sampling method). This means analysis on a liquid chromatograph with absorbance detector. Duplicate air samples were taken and the results are mean values. Sampled volumes were 30 to 50 L.

Results

The results in Table 2 are expressed as area specific emission rates and as concentrations in a reference room. The reference room has a base area of 3 m x 4 m and a height of 2.5 m, with an air exchange rate of 0.5 h⁻¹. The wall area is 31.4 m², floor area is 12 m², small area, like a door, is 1.6 m² and very small area, like sealant, is 0.2 m². Wall area is used for the calculation of the concentrations.

Calculation of the concentration from the emission rate:

$$C = \frac{E_a \times A}{n \times V}$$

C = concentration of VOC in the reference room, in µg/m³
 E_a = area specific emission rate, in µg/m²h
 A = surface area of product in reference room, in m²
 n = air exchange rate, in changes per hour, here 0.5 h⁻¹
 V = volume of the reference room, in m³, here 30 m³

Table 2.
Emission results of **HW01** after 28 days

Volatile organic compounds	CAS number	Retention time (min)	ID ¹	Emission rate ($\mu\text{g}/\text{m}^2\text{h}$)	Concentration in reference room ($\mu\text{g}/\text{m}^3$)	LCI _i ($\mu\text{g}/\text{m}^3$)	R _i (c_i/LCI_i)
TVOC (C ₆ – C ₁₆)	--	6.5 – 38	B	< 10	< 10	--	--
Volatile Carcinogens ²		6.5 – 38					
No substances detected	--	--	B	< 1	< 1	--	--
VOC with LCI ³		6.5 – 38					
No substances detected	--	--	B	< 2	< 5	--	--
Σ VOC with LCI	--	--	B	< 2	< 5	--	--
VOC without LCI ⁴							
No substances detected	--	--	B	< 2	< 5	--	--
Σ VOC without LCI	--	--	B	< 2	< 5	--	--
SVOC (C ₁₆ – C ₂₂) ⁵		38 - 51					
No substances detected	--	--	B	< 2	< 5	--	--
Σ SVOC	--	--	B	< 2	< 5	--	--
VVOC (< C ₆) ⁶		4.9 – 6.5					
Formaldehyde ⁷	50-00-0	--	A	< 2	< 5	100	--
Acetaldehyde ⁷	75-07-0	--	A	< 2	< 5	1 200	--
Σ VVOC	--	--	A	< 2	< 5	--	--
$R = \Sigma C_i / \text{LCI}_i$ ⁸	--	--	--	--	--	--	< 0.01

¹) ID: A = quantified compound specific, B = quantified as toluene-equivalent

²) Volatile carcinogens = VOCs according to EU Regulation No 1272/2008 Annex VI, cat 1A and 1B

³) VOC with LCI = identified VOC-compound with LCI-value according to EU-LCI, Dec 2016

⁴) VOC without LCI = VOC-compound without LCI-value or not identified.

⁵) SVOC = semi-volatile organic compounds, as defined in ISO 16000-6 (not part of accreditation)

⁶) VVOC = very volatile organic compounds, as defined in ISO 16000-6 (not part of accreditation)

⁷) VVOC-aldehydes measured with DNPH samplers (ISO 16000-3)

⁸) All VVOC, VOC, SVOC and carcinogens with LCI

n.d. = not detected (detection limit is approx $1 \mu\text{g}/\text{m}^2\text{h}$).

Only VOC-compounds with an emission rate higher than $2 \mu\text{g}/\text{m}^2\text{h}$ are listed in Table 2, carcinogenic compounds $\geq 1 \mu\text{g}/\text{m}^2\text{h}$. Only the compounds with a concentration in the reference room $> 5 \mu\text{g}/\text{m}^3$ are evaluated based on LCI (= lowest concentration of interest). TVOC expressed in $\mu\text{g}/\text{m}^3$ is the sum of all individual substances with concentrations $\geq 5 \mu\text{g}/\text{m}^3$ (in toluene equivalents).

Quantification limit for TVOC is $10 \mu\text{g}/\text{m}^2\text{h}$. Measurement uncertainty for VOC is 15 % (rel) and for formaldehyde 30 % (rel). Background of TVOC in the empty chamber was below $20 \mu\text{g}/\text{m}^3$ and is subtracted.

See Appendix 1 for a gas chromatogram (FID spectra) and Appendix 2 for a photo of the test specimens. Appendix 3 is the sampling report received from the customer.

Summary of the test results

The test results are summarized in Table 3.

Table 3.

Summary of the emission results after 28 days of **HW01**

Compounds	Emission rate ($\mu\text{g}/\text{m}^2\text{h}$)	Concentration in reference room (wall scenario) ($\mu\text{g}/\text{m}^3$)
TVOC	< 10	< 10
Σ Carcinogenic VOCs	< 1	< 1
Σ VOC with LCI	< 2	< 5
Σ VOC without LCI	< 2	< 5
Σ VVOC	< 2	< 5
Formaldehyde	< 2	< 5
Σ SVOC	< 2	< 5
$R = \Sigma C_i / \text{LCI}_i$	< 0.01	

RISE Research Institutes of Sweden AB **Chemistry and Materials - Chemistry**

Performed by

Examined by

Maria Rådemar

Tove Malin

Appendices

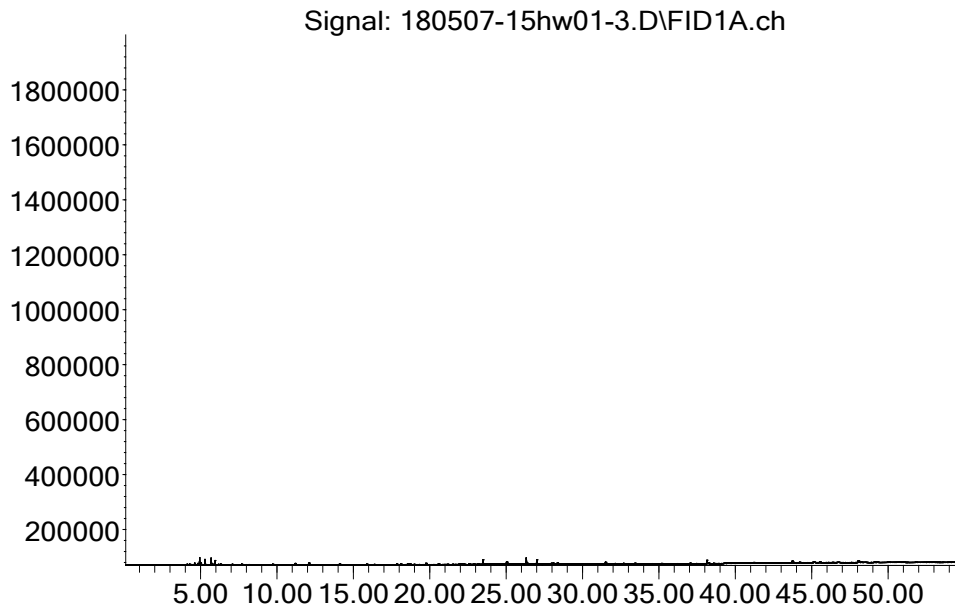
1. Gas Chromatogram
2. Photo of the test specimens
3. Sampling report

Appendix 1

Gas chromatogram

HW01, after 28 days:

Abundance



TVOC between C₆ and C₁₆, means compounds eluting between 6.5 and 38 minutes.

Appendix 2

Photo of the test specimens

Appendix 3

Sampling Report (paints etc)

Sampler (Name, Company, contact info): Scandinavian Trading Ltd, unit 2, Glen court, Canada Road, Byfleet, Surrey, KT14 7JL, United Kingdom		Manufacturer of the product (Company, address): Intumescent Systems Ltd, Envirograf House, Barfrestone, Dover, Kent CT15 7JG, United Kingdom	
Name of product: HW01		Product category according to EN 16402:2013, clause 5: Type 4 Function: Passive fire protection	
Manufacturing Date: January 2018		Batch No: 180414	
Amount of material sampled: 1 lit		Density (g/L): 1.28-1.31	
Solid content (vol %): 59%		Spreading rate (m²/L): 2 coats of 125 µ, Total spreading rate: 8 m ² /litre per coat	
Sample is taken from: Production line <input type="checkbox"/> Stock / Storage <input checked="" type="checkbox"/> Miscellaneous <input type="checkbox"/> -where, specify:		How was the product stored before sampling? Indoor environment	
If a sub-sample was collected from a larger material amount, describe how the sub-sample was taken: n/a		Packing material: Metal tin	
Remarks:			
Confirmation: I hereby confirm that the sample was selected, taken and packed in accordance with this protocol.			
Date of sampling: 15.02.2018		Signature: 